





# COMMUNITY NEEDS ASSESSMENT

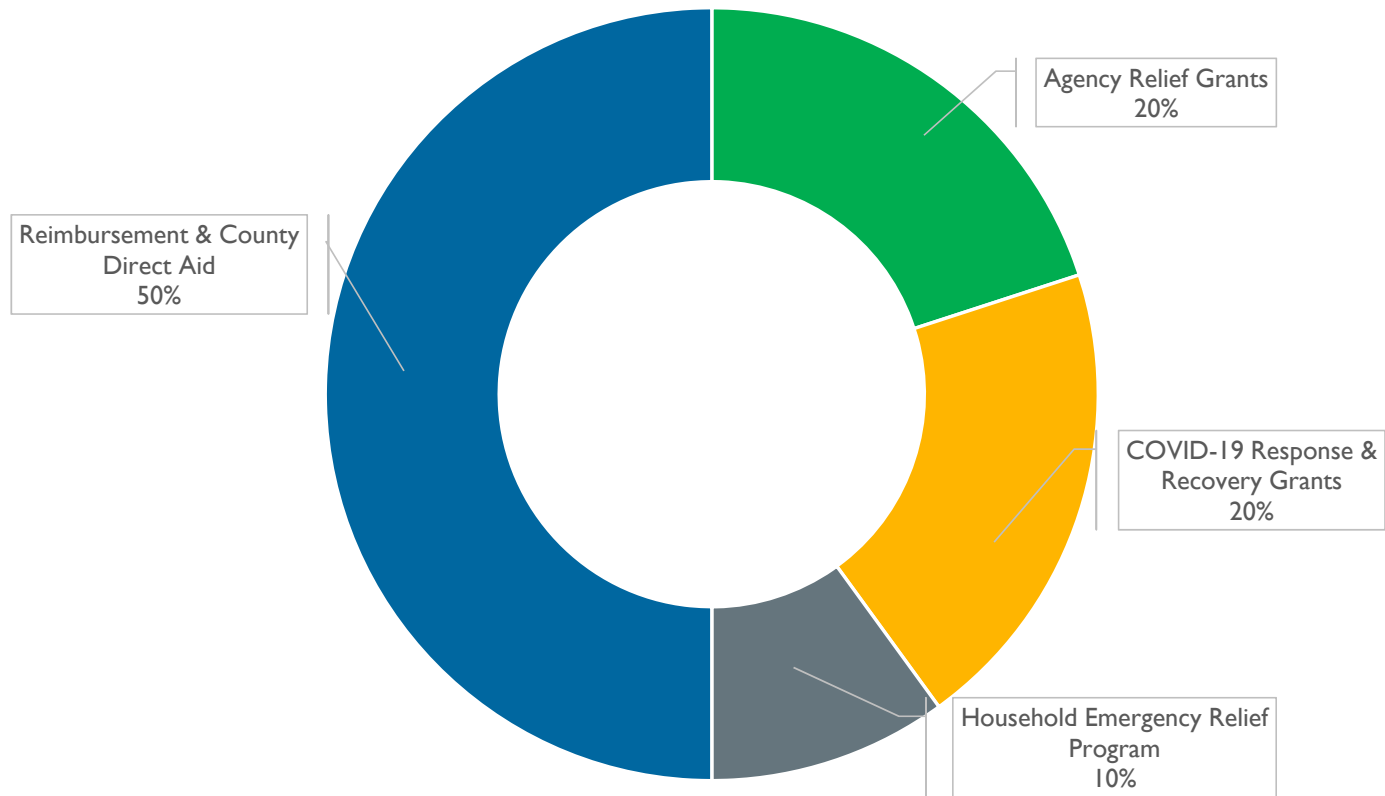


## KEY TAKEAWAYS FROM THE COMMUNITY IMPACT SURVEY

- Limited funding for household support (i.e. rent, utilities, mortgage, food)
- Need for increased behavioral health support
- Lack of quality, affordable broadband access
- Limited access to telehealth and telemedicine
- Limited access to affordable childcare
- More support required for small businesses and nonprofits
- Need for increased workforce development and job creation



# PROGRAM BUDGET



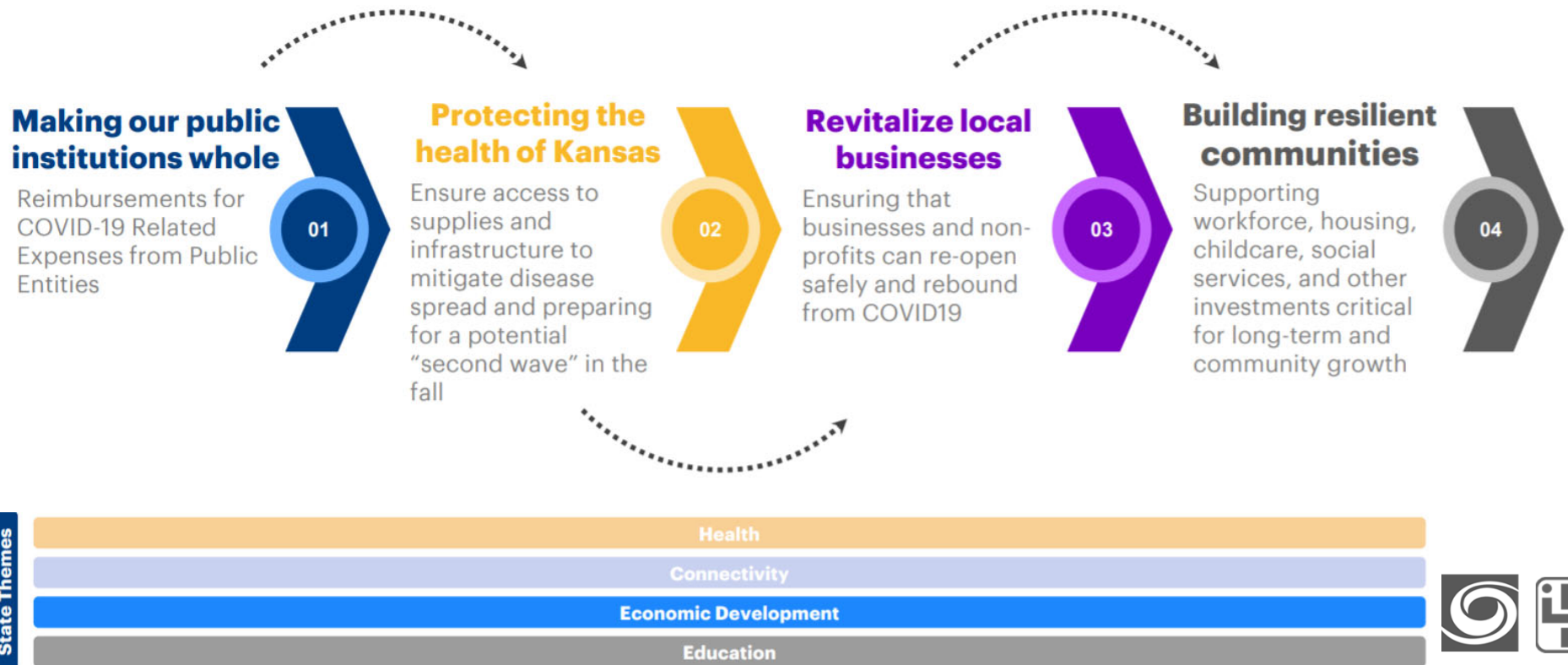




# ADDRESSING OUR COMMUNITY NEEDS

FUNDING PRIORITIZATION AND OBJECTIVES

# FUNDING PRIORITIZATION ROADMAP



# OUR FUNDING PRIORITIES & OBJECTIVES

## Health

- ✓ Improve capacity to respond to and mitigate spread of COVID-19
- ✓ Enhance mental healthcare services and increase accessibility
- ✓ Support food distribution and access

## Connectivity

- ✓ Improve access to quality, affordable broadband
- ✓ Increased access to telehealth and medicine
- ✓ Digital infrastructure investments including increased access to technology

## Economic Relief & Development

- ✓ Provide support to local agencies
- ✓ Increase availability and accessibility to childcare
- ✓ Improve resiliency of our workforce
- ✓ Equip organizations to stay open and prevent disease spread
- ✓ Support household needs

## Education

- ✓ Invest in higher education and community colleges to prepare for COVID
- ✓ Invest in K-12 education to prepare for COVID and flexible learning





# COVID-19 REIMBURSEMENT & FEMA MATCHING PROGRAM

PROGRAM INTAKE: SEPTEMBER 05, 2020 - NOVEMBER 05, 2020



## COVID-19 Reimbursement and FEMA Matching Program

This Program is designed to provide the County with flexible spending to use to reimburse COVID-19 related costs incurred by governmental entities, private nonprofits, education institutions, and united school districts from March 1, 2020 through July 31, 2020 that were necessary and reasonable to respond to and mitigate the spread of COVID-19.

On August 15th, Finney County submitted Its first County and Subrecipient Reimbursement report of incurred COVID-19 related expenditures for the County and qualifying entities who had submitted eligible expenses through the County's Reimbursement Portal. This Program serves as a continuation of this activity, to ensure that the County and qualifying entities have sufficient time to submit expenses for costs Incurred from March 1, 2020 to July 31, 2020.

### PROGRAM ALLOCATION - \$957,312.05

Eligible Applicants can submit request(s) for reimbursement through the [County's Reimbursement Portal](#). As funds are limited, eligible reimbursements are subject to funding availability and will be assessed against the County's funding priorities.

Award varies.





# COVID-19 AGENCY OPERATIONAL RELIEF GRANTS

PROGRAM INTAKE: SEPTEMBER 16, 2020 — OCTOBER 14, 2020

## PROGRAM DESCRIPTION

The Program provides grants to cover eligible COVID-19 expenditures made or planned through year-end 2020, including costs associated with operating losses, costs of "business interruptions and disruptions," and expenses related to public health actions for businesses and non-profits.

In addition to supporting small businesses and nonprofits, the County will provide governmental entities, political subdivisions, and municipalities such as cities, higher education institutions, and school districts with grants to address the impact of COVID-19. In accordance with section 601 (d) of the Social Security Act, public entities are not eligible for revenue replacement.

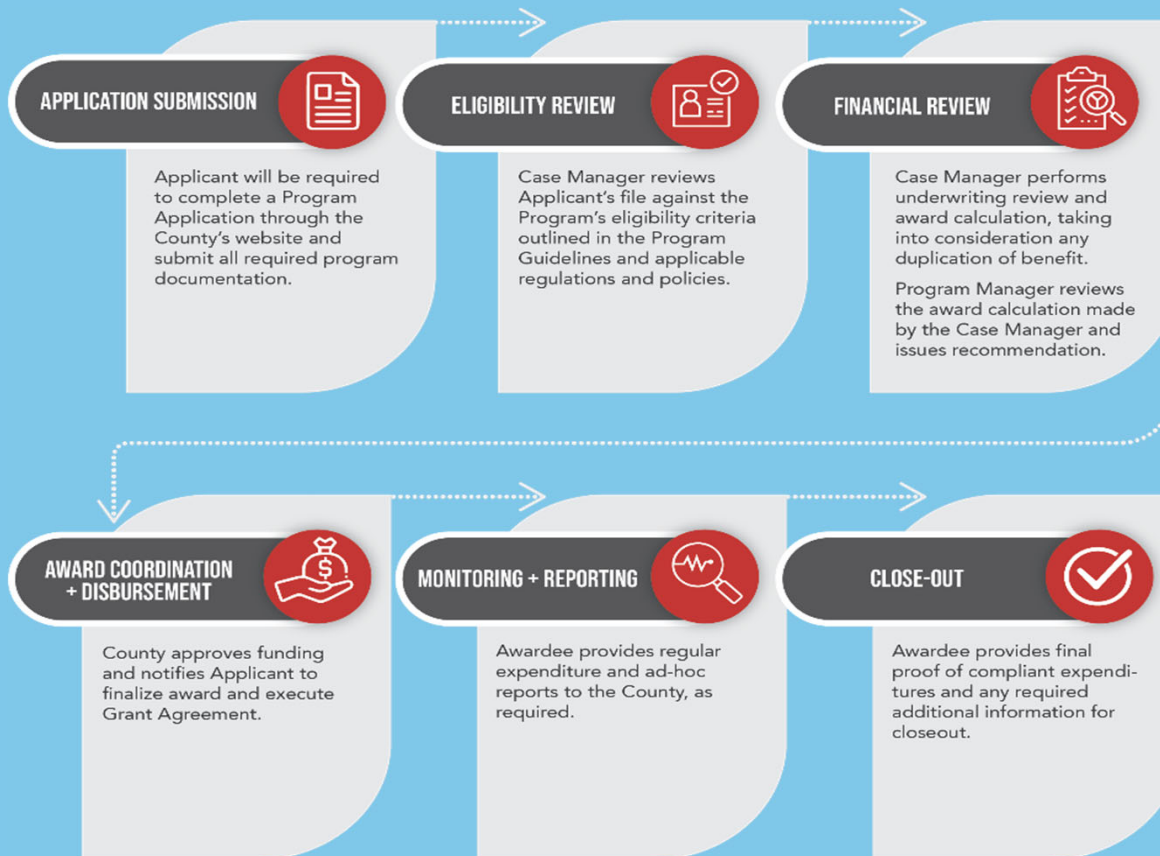
### PROGRAM ALLOCATION - \$2,184,933.00

Interested Applicants should visit the County's website to complete a program application and submit all required documentation. When the Applicant's information and supporting documentation is provided, the Program will review submissions against the Program's eligibility and funding criteria to determine the Applicant's eligibility and award amount.

MIN AWARD \$5,000 | MAX AWARD \$250,000



## HOW DOES THE PROGRAM WORK?





## Eligible Expenditures

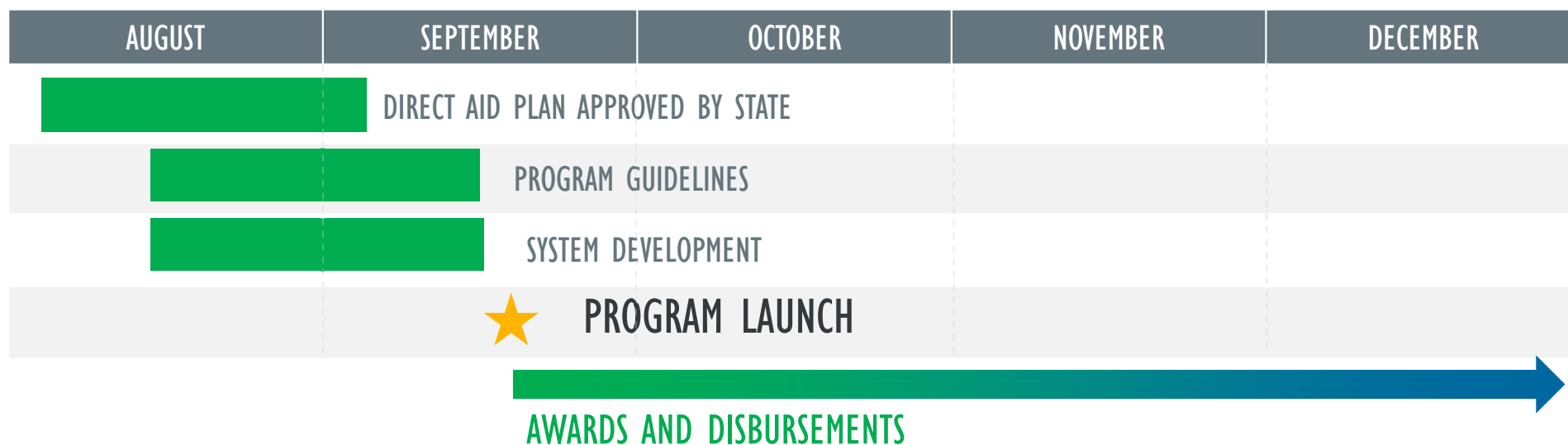


- ✓ Up to **3 months** of documented working capital expenses for **small businesses and private nonprofits**, including:
  - Inventory
  - Monthly office and / or facility mortgage or rent
  - Monthly non-owner wages and related benefits
  - Monthly utilities (electricity or gas service, water, cable, phone, and internet)
- ✓ Equipment that is not affixed to the real property and is necessary for the responding to or mitigating of the impact of COVID-19.
- ✓ Purchase of personal protective equipment (PPE) and sanitation supplies;
- ✓ Technical assistance, including training and guidance to stabilize; and
- ✓ Other measures to respond to or mitigate the impact of COVID-19.



# OPERATIONAL AGENCY RELIEF GRANT PROGRAM

## Program Timeline





# COVID-19 HOUSEHOLD EMERGENCY RELIEF PROGRAM

PROGRAM INTAKE: SEPTEMBER 16, 2020 — OCTOBER 31, 2020

## PROGRAM DESCRIPTION

The County has established the COVID-19 Household Emergency Relief Program designed to alleviate burdens on the most vulnerable individuals or households experiencing financial crises due to the COVID-19 pandemic. The Program provides funding for residents to pay up to four months of past-due rent, mortgage and utility payments, as well as, funding to cover the increased rent, mortgage and utility burden due to financial hardships caused by COVID-19 for up to two months. Further, given concerns about the cost of broadband, the County will also aid with covering the cost of broadband installation and / or up to four months of funding to cover broadband services for LMI households.

### PROGRAM ALLOCATION - \$1,092,446.50

Interested Applicants should visit the County's website to complete a program application and submit all required documentation or apply in person at a designated Program Intake Center.

Funding for this Program is awarded on a needs basis. Households who meet eligibility requirements will be awarded a grant to cover the unique needs of the household, based on factors such as household size, household income, and actual demonstrated expense.

**MAX AWARD \$10,000 PER HOUSEHOLD**





THIS PROGRAMS  
SEEKS TO  
ALLEVIATE  
FINANCIAL  
PRESSURE AND  
PROVIDE  
GREATER  
ECONOMIC  
SECURITY BY:

- Reducing the rent and utility burden on rental households and preventing homelessness for households impacted by COVID-19
- Mitigating the risk of homeowners foreclosing on their homes due to financial hardship caused by COVID-19
- Increasing the affordability of broadband access for Low and Moderate (LMI) households to improve access to telehealth, facilitate distance learning, and allow for remote work



## HOUSEHOLD ELIGIBILITY CRITERIA

- Must be a resident of Finney County
- Inability to pay due to a temporary job loss, reduced work hours or other income hardship caused by COVID-19 pandemic, beginning March 10, 2020 or later
- The household has not received assistance from any other source for the same activity and time period as requested through this program
- Your landlord or property manager or mortgage company must agree to participate in the program. (No payments will be made directly to the applicant.)
- Household liquid assets (e.g., savings, checking, cash) should not exceed \$10,000

## APPLICANT DOCUMENT CHECKLIST

- ✓ Completed Application
- ✓ Form of Picture Identification
- ✓ Active Lease Agreement, including an agreement to rent month-to-month if expired (if renter)
- ✓ Most recent mortgage statement (if homeowner)
- ✓ Most recent utility bills
- ✓ Verification of all sources of Income. Examples include:
  - Pay Stubs (1 month)
  - Unemployment Award Letter
  - Social Security, Disability or Social Security Income Award Letter
  - Verification of Pension
  - Verification of Child Support/Alimony
  - Veteran's Benefit
  - Worker's Compensation Statement
  - Self-employment — Year to date Profit/Loss and last two years income tax



# WHAT KIND OF ASSISTANCE IS AVAILABLE?



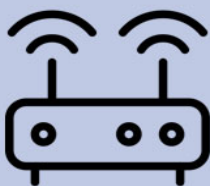
## Rental or Mortgage Assistance

- 1-4 months of full payment for arrears on rent or mortgage payments.
- 1-2 months of partial payment to cover the difference between the Applicant's rent burden for current & future rent or mortgage payment.



## Utility Assistance

- 1-4 months of utility arrears (including: water, electric or gas services)
- 1-2 months of utility assistance for future payments
  - Utility assistance capped at \$500 per month or at the average utility price determined from previous billing statements

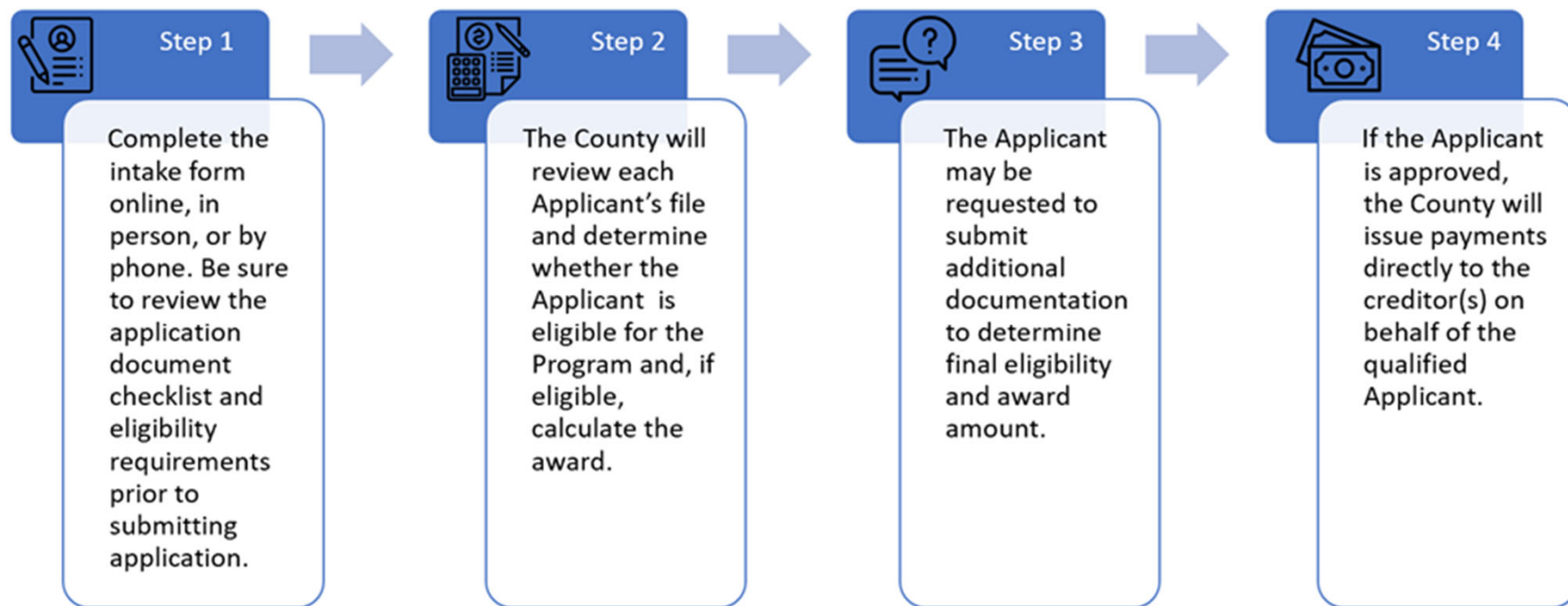


## Broadband Assistance (LMI Households)

- Set up and installation fees of broadband services
- 1-4 months of full payment on broadband services to pay for arrears and/or credit future payments



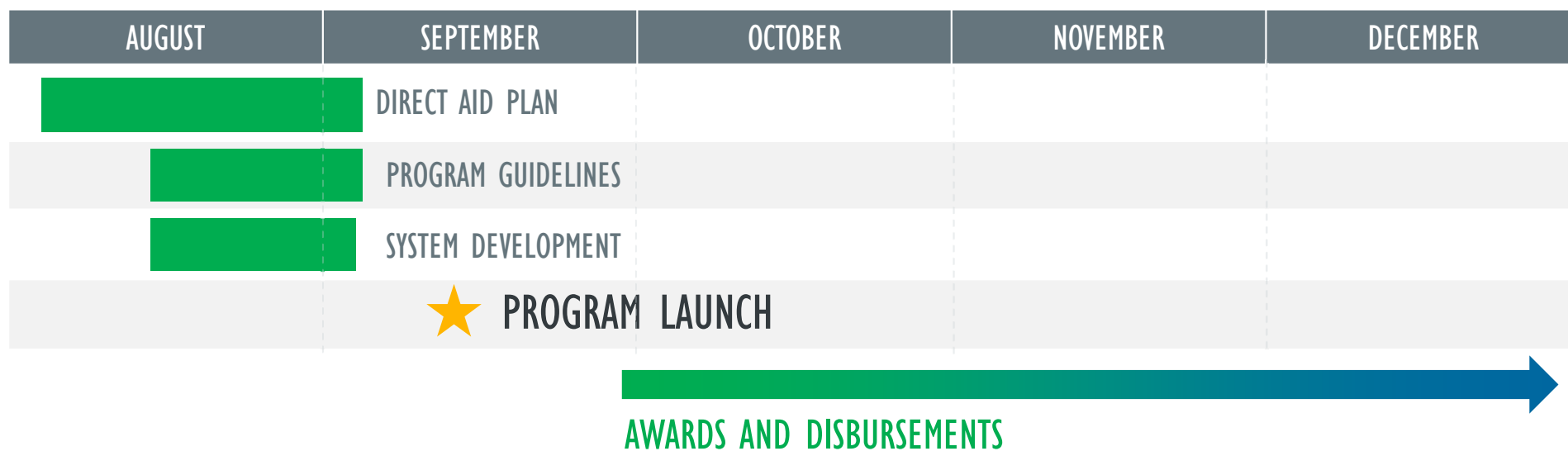
# HOW DOES THE PROGRAM WORK?





# HOUSEHOLD RELIEF PROGRAM

## Program Timeline





# COVID-19 RESPONSE AND RECOVERY GRANT PROGRAM

NOFA RESPONSE PERIOD: SEPTEMBER 21, 2020 — OCTOBER 02, 2020

## PROGRAM DESCRIPTION

In response to the COVID-19 Pandemic, Response and Recovery Fund to support individuals and families negatively impacted by the pandemic. The grants are designed to help nonprofits, community organizations, and healthcare providers to respond to and mitigate the impact of COVID-19 and propose recovery initiatives that are right-sized for targeted relief of the communities served.

### PROGRAM ALLOCATION - \$1,857,187.95

This fund will be announced through a **Notice of Funding Availability (NOFA)**. Eligible entities will submit responses to the NOFA proposing their unique solutions and initiatives. This approach allows the County to leverage the intellectual capital and expertise of its organizations to select the proposals that best align with the county goals and available funding. Funds will be awarded through a grant.

MIN AWARD \$5,000 | MAX AWARD \$200,000



## PROGRAM FUNDING PRIORITIES



### CONNECTIVITY

The connectivity set aside will be targeted to Connectivity proposals that focus on the enhancement, installation, and fortification of digital infrastructure to support tele-medicine, distance learning, and support digitalization of businesses.



### WORKFORCE

Workforce training set aside will be targeted specifically to target proposals by nonprofits and institutions of higher education to provide technical and life skills training and financial and logistical support services to assist unemployed and/or underemployed workers secure marketable skills.



### CHILDCARE

Childcare set aside will be targeted towards proposals that focus on increasing availability and accessibility of childcare services within the County.

## PROPOSAL EVALUATION

Program proposals will be evaluated and awarded in accordance with the criteria outlined in the NOFA, but will be based upon the following:

- Alignment with the State and County's Funding Priorities
- Organizational Capacity
- Leveraging of Other Funding Sources



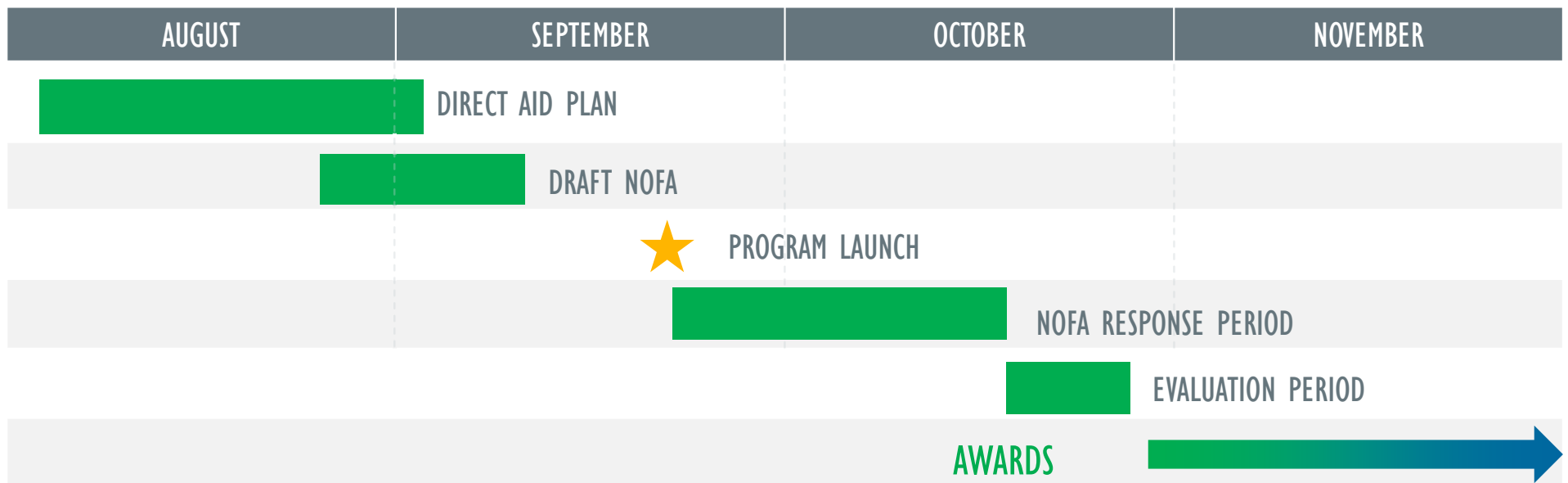
## Slide 24

---

**AH1**    Adriana, if you could replace this text with graphics.  
Alexandria Harvey, 8/9/2020

# COVID-19 RESPONSE AND RECOVERY GRANTS

## Program Timeline







 **METRIC**  
CONSULTING